



ANCHORPOINT

Boulder, Colorado

(303) 665-FIRE

www.AnchorPointGroup.com

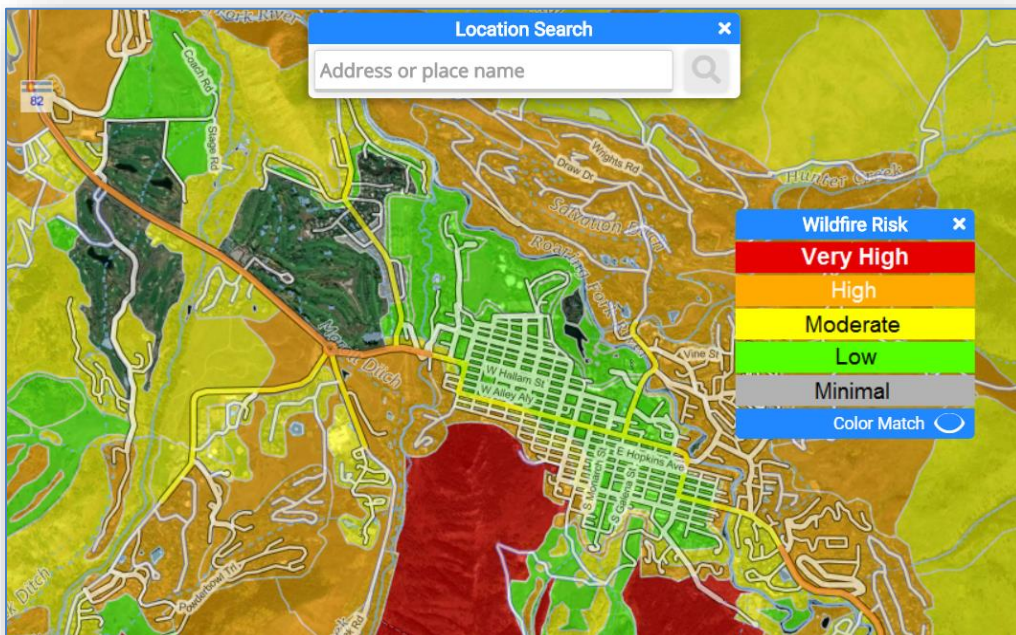
No-HARM - Aspen

The National Hazard and Risk Model (No-HARM) is a versatile, mapping product customized at the local level and designed to assess exposure of critical infrastructure and property to wildfire impacts. Drawing on a large variety of data sets, both in and outside the public domain, No-HARM paints a picture of wildfire exposure for your jurisdiction, at regional and neighborhood scales. The focus of No-HARM is to address the complexity of the Wildland-Urban Interface (WUI) through the use of data sets

that accurately identify the boundaries of the WUI and analyze the threat to these areas from fire effects present in adjacent fuel. Embers, smoke and direct flame exposure all represent dangers to people and property that are captured in the model. No-HARM offers tremendous potential to manage fire through the prevention, preparedness and response phases and can reduce risk to the public, firefighters, property and critical infrastructure.

No-HARM Features:

- Provides a consistent, local wildfire risk assessment
- Integrates Aspen's local data into our wildfire model
- Models a combination of wildfire probability and fire severity
- Identifies urban core, WUI and intermix communities and evaluates the threat to each separately
- Utilizes proprietary FireShed© techniques to smooth wildland fuels and fire behavior into functional planning units
- Analyzes threat due to direct exposure to flame, ember cast and smoke in areas with adjacent wildland fuel
- fuel (fuel islands) and calculates wildfire vulnerability of homes in the urban core areas of your jurisdiction



Prevention:

- The Aspen Fire Department bear a substantial public education and outreach responsibility for the jurisdictions. No-HARM facilitates prioritized, targeted public education efforts toward those under the most exposure due to wildfire.
- No-HARM is capable of generating statistics at any jurisdictional level that can be used to interface with the media and other special interest groups. These statistics can drive the wildfire prevention message to the public.
- Statistics can also be used to make effective decisions on public policy and budgets regarding wildfire prevention.

Preparedness:

- No-HARM supports the Fire Department's leadership role in providing comprehensive, local data on wildfire vulnerability to the city, county, state and other stakeholders.
- Consistent, local data on wildfire risk will allow the Fire Department to make effective long-term planning and management decisions, supporting their function as subject matter experts in wildfire.
- No-HARM also supports wildfire mitigation grant applications by providing applicants and sub-applicants with reliable data to define feasibility and effectiveness and clearly exhibit need within the grant application.

Response:

- Used in conjunction with local response plans already in use, or developed by Anchor Point, No-HARM will allow more refined operational decisions to be made regarding critical infrastructure and other values-at-risk.
- No-HARM can provide a baseline for fire behavior before formal Incident Management Team activities have started. Important structure protection planning information can be made available during initial attack.

BELOW: No-HARM provides wildland, community and urban edge risk ratings, including the ember zone, shown in purple.

